



## GAYATRI VIDYA PARISHAD COLLEGE OF ENGINEERING FOR WOMEN

(Approved by AICTE New Delhi, Affiliated to JNTUK Kakinada)

(Accredited by National Board of Accreditation(NBA) for B.Tech CSE, ECE & IT - Valid from 2019-20 to 2021-22)

Kommadi, Madhurawada, Visakhapatnam - 530 048

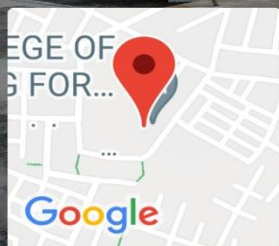
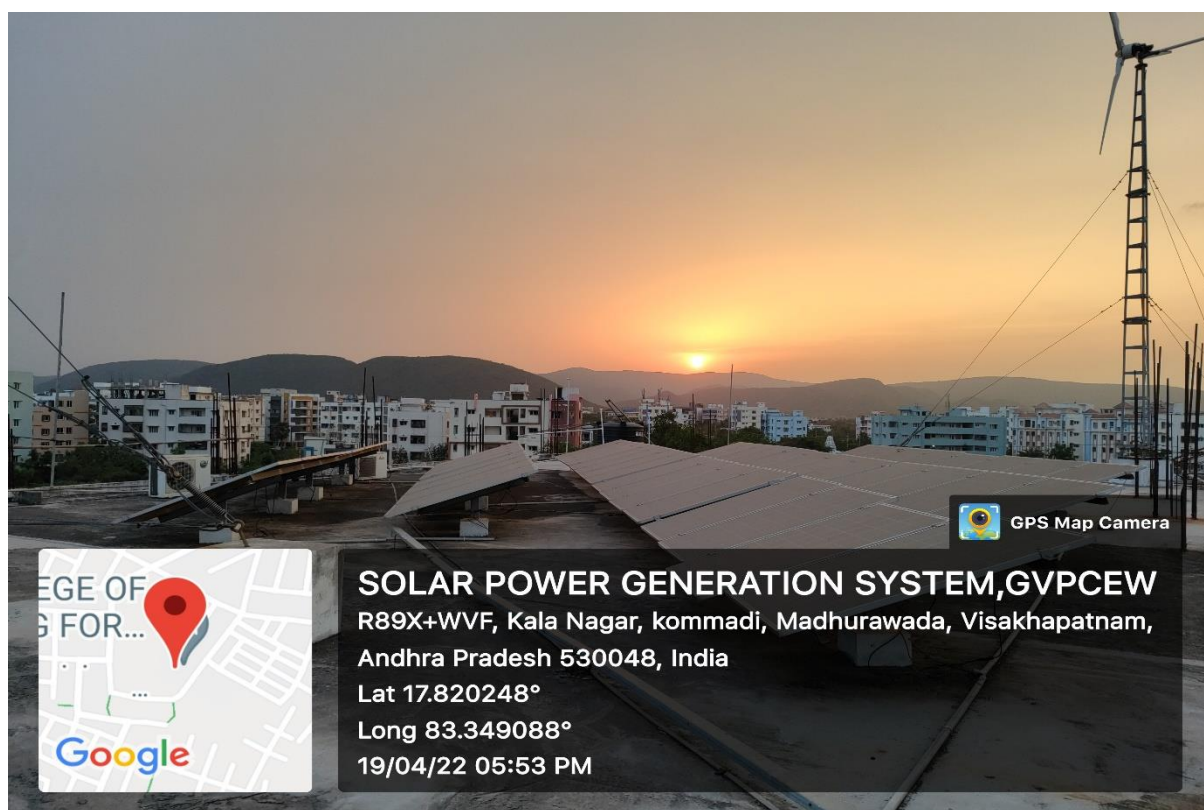
Phone: 91-891-2739144 / 2719124 / 2719125 / 2719127

Email id: gvpcew@gmail.com, info@gvpcew.ac.in

Eamcet counselling  
code: GVPW

**7.1.2: The Institution has facilities for alternate sources of energy and energy conservation measures**

### **SOLAR POWER GENERATION SYSTEM:**



#### **SOLAR POWER GENERATION SYSTEM,GVPCEW**

R89X+WVF, Kala Nagar, kommadi, Madhurawada, Visakhapatnam,  
Andhra Pradesh 530048, India

Lat 17.820248°

Long 83.349088°

19/04/22 05:53 PM



# GAYATRI VIDYA PARISHAD COLLEGE OF ENGINEERING FOR WOMEN

(Approved by AICTE New Delhi, Affiliated to JNTUK Kakinada)

(Accredited by National Board of Accreditation(NBA) for B.Tech CSE, ECE & IT - Valid from 2019-20 to 2021-22)

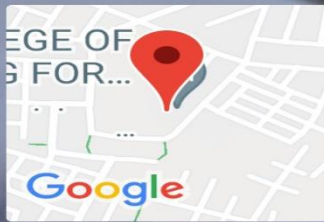
Kommadi, Madhurawada, Visakhapatnam - 530 048

Phone: 91-891-2739144 / 2719124 / 2719125 / 2719127

Email id: gvpcew@gmail.com, info@gvpcew.ac.in

Eamcet counselling  
code: GVPW

## WIND POWER GENERATION SYSTEM



**WIND POWER GENERATION SYSTEM,GVPCEW**  
R89X+WVF, Kala Nagar, kommadi, Madhurawada,  
Visakhapatnam, Andhra Pradesh 530048, India  
Lat 17.820248°  
Long 83.349088°  
19/04/22 05:52 PM





# GAYATRI VIDYA PARISHAD COLLEGE OF ENGINEERING FOR WOMEN

(Approved by AICTE New Delhi, Affiliated to JNTUK Kakinada)

(Accredited by National Board of Accreditation(NBA) for B.Tech CSE, ECE & IT - Valid from 2019-20 to 2021-22)

Kommadi, Madhurawada, Visakhapatnam - 530 048

Phone: 91-891-2739144 / 2719124 / 2719125 / 2719127

Email id: gvpcew@gmail.com, info@gvpcew.ac.in

Eamcet counselling  
code: GVPW

## BATTERIES FOR SOLAR AND WIND PLANT





# GAYATRI VIDYA PARISHAD COLLEGE OF ENGINEERING FOR WOMEN

(Approved by AICTE New Delhi, Affiliated to JNTUK Kakinada)

(Accredited by National Board of Accreditation(NBA) for B.Tech CSE, ECE & IT - Valid from 2019-20 to 2021-22)

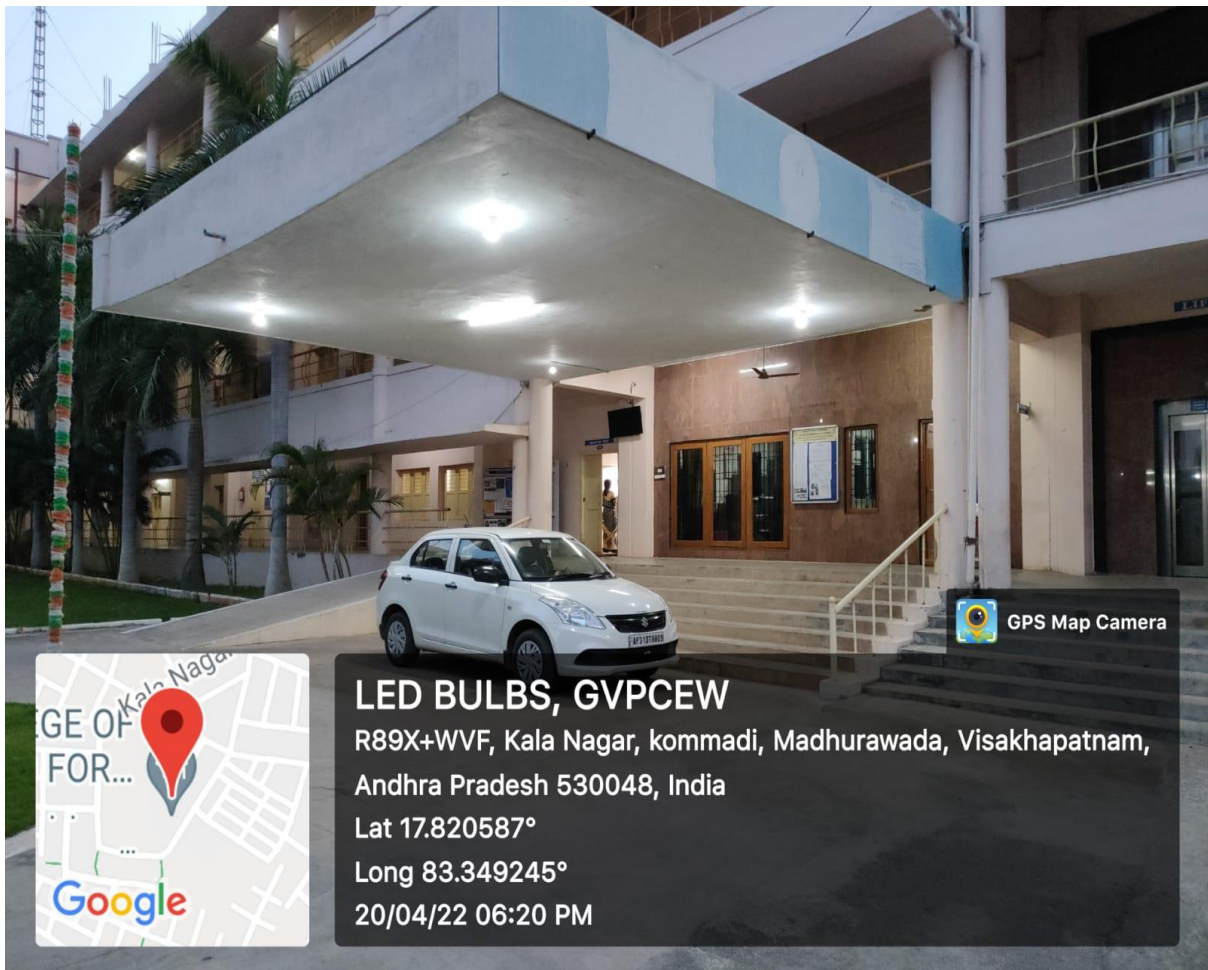
Kommadi, Madhurawada, Visakhapatnam - 530 048

Phone: 91-891-2739144 / 2719124 / 2719125 / 2719127

Email id: gvpcew@gmail.com, info@gvpcew.ac.in

Eamcet counselling  
code: GVPW

## Use of LED bulbs:







# GAYATRI VIDYA PARISHAD COLLEGE OF ENGINEERING FOR WOMEN

(Approved by AICTE New Delhi, Affiliated to JNTUK Kakinada)

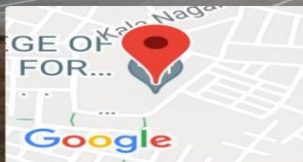
(Accredited by National Board of Accreditation(NBA) for B.Tech CSE, ECE & IT - Valid from 2019-20 to 2021-22)

Kommadi, Madhurawada, Visakhapatnam - 530 048

Phone: 91-891-2739144 / 2719124 / 2719125 / 2719127

Email id: gvpcew@gmail.com, info@gvpcew.ac.in

Eamcet counselling  
code: GVPW



## LED BULBS, GVPCEW

R89X+WVF, Kala Nagar, Kommadi, Madhurawada,  
Visakhapatnam, Andhra Pradesh 530048, India

Lat 17.820587°

Long 83.349245°

20/04/22 06:20 PM



# GAYATRI VIDYA PARISHAD COLLEGE OF ENGINEERING FOR WOMEN

(Approved by AICTE New Delhi, Affiliated to JNTUK Kakinada)

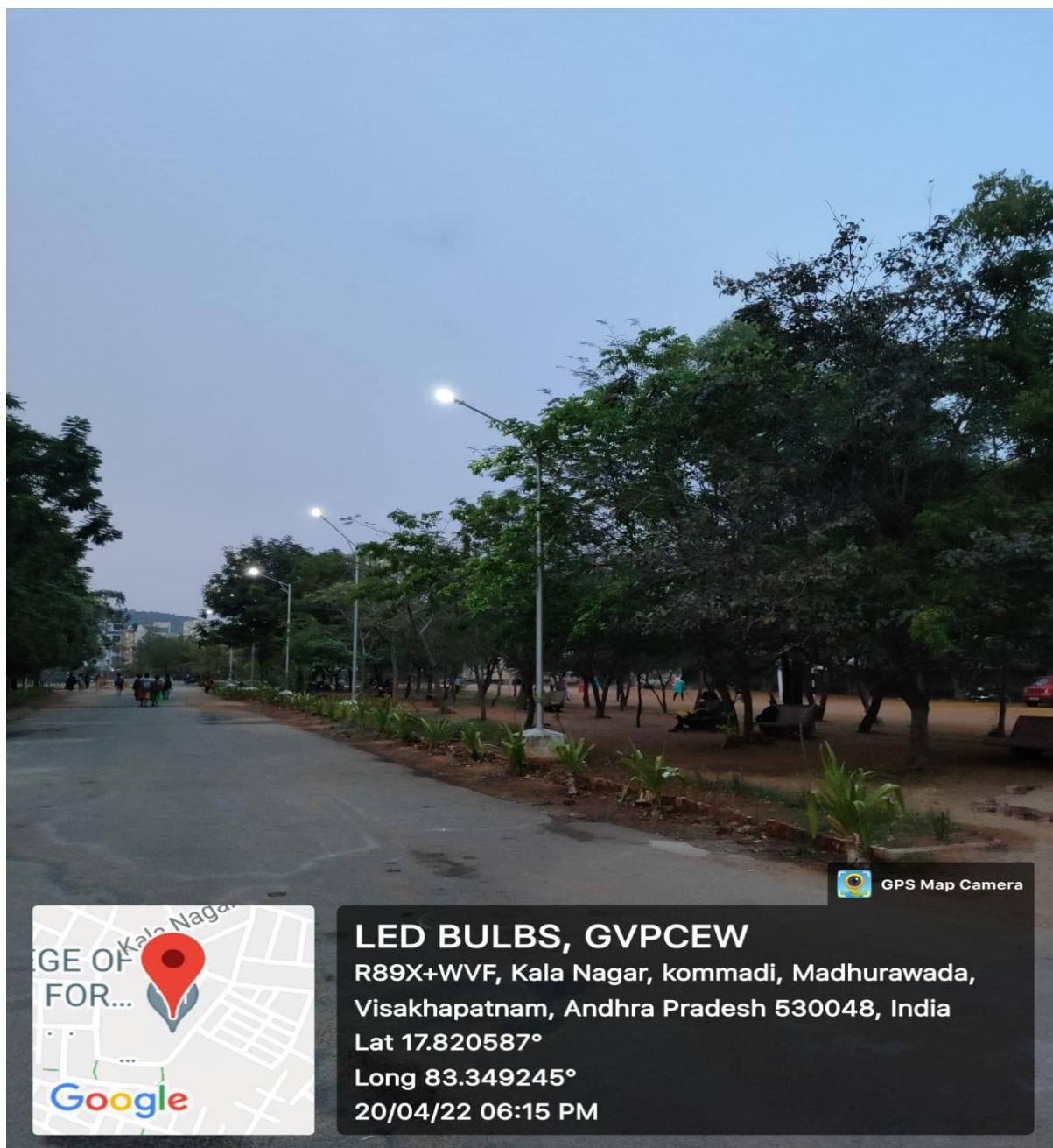
(Accredited by National Board of Accreditation(NBA) for B.Tech CSE, ECE & IT - Valid from 2019-20 to 2021-22)

Kommadi, Madhurawada, Visakhapatnam - 530 048

Phone: 91-891-2739144 / 2719124 / 2719125 / 2719127

Email id: gvpcew@gmail.com, info@gvpcew.ac.in

Eamcet counselling  
code: GVPW



GPS Map Camera

## LED BULBS, GVPCEW

R89X+WVF, Kala Nagar, kommadi, Madhurawada,  
Visakhapatnam, Andhra Pradesh 530048, India

Lat 17.820587°

Long 83.349245°

20/04/22 06:15 PM